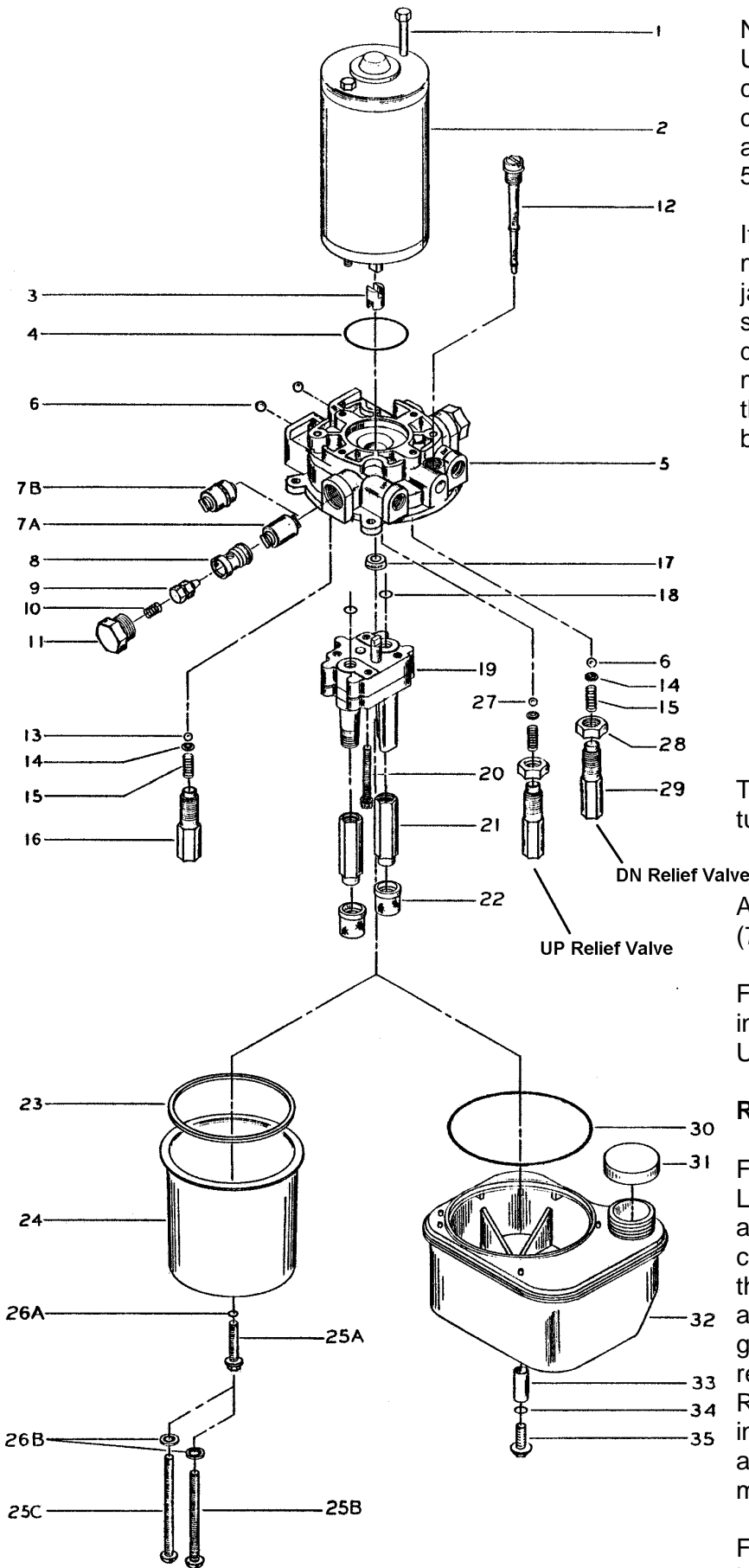


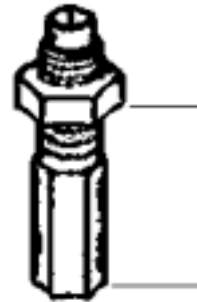
108 SERIES POWER UNIT RELIEF VALVE ADJUSTMENT and CLEANING INSTRUCTIONS



Note the designations in the drawing at left for the UP and DN relief valves. The UP relief valve corresponds to the UP port; the DN relief valve corresponds to the DN port. (These designations are found in the casting above each port on Item 5.

If disassembly of the relief valve is planned measure the distance between the bottom of the jam nut, Item 28, and the end of the adjusting screw, Item 29 (shown below). Make note of this dimension so upon re-assembly of the valve the measurement can serve as a guide in getting to the original setting. Do this for each relief valve being worked on.

Pressure Setting Changes



To adjust the relief valve loosen the jam nut, Item 28, on the applicable relief valve. Tighten the relief valve adjusting screw, Item 29 to increase the setting and loosen the adjusting screw to reduce the setting.

The approximate pressure setting changes per full turn of the adjusting screw are:

- UP Side: 500 psi
- DN Side: 300 psi

After the changes are made retighten the jam nut (70 in-lb max.) against the adapter, Item 5.

Follow the original bleeding and startup instructions supplied with the 108 Series Power Unit.

Relief Valve Cleaning

Follow the measuring instructions given above. Loosen the jam nut, Item 28. Unscrew the adjusting screw, Item 29, completely taking care to catch all internal relief valve components. Flush the relief valve seat (the cavity in the 108 Series adapter, Item 5, into which the adjusting screw goes) to remove any contamination. Examine the relief valve ball, Item 6, and clean as needed. Reassemble all relief valve components as shown in the diagram at left. Tighten the adjusting screw and jam nut to achieve the earlier recorded measurement. Repeat for second relief valve.

Follow the original bleeding and startup instructions supplied with the 108 Series Power Unit.